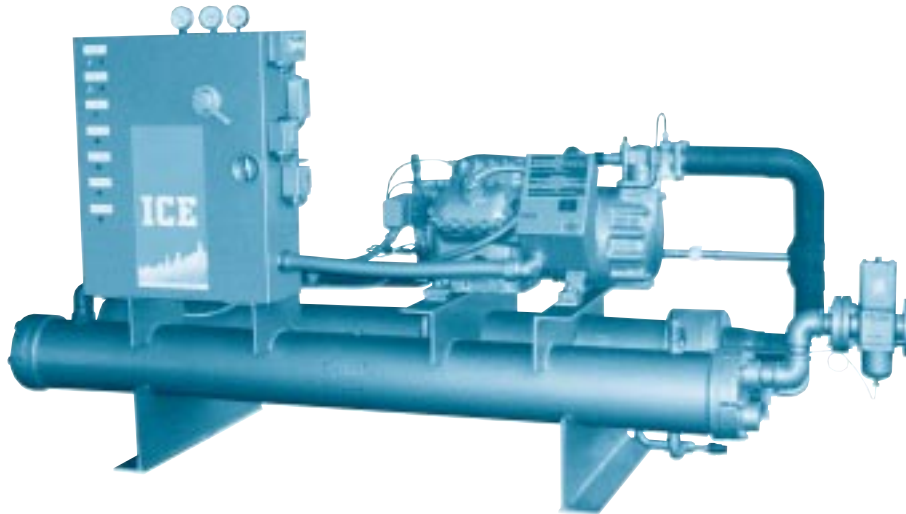


# CENTRAL SYSTEM WATER-COOLED CHILLERS



## *WM-S and WM-D Water-Cooled Chillers*

ICE WM-S and WM-D Series Water-Cooled Chiller Modules are engineered for industrial processing applications where 85°F cooling tower water is available. The modular design offers money-saving flexibility. You buy only the capacity your company needs today – additional modules can be added as your requirements grow. The WM-S and WM-D Series Chillers incorporate a high-flow process water pump that minimizes process temperature gradients. The result enhances product consistency.

Available in single and dual-compressor configurations, the WM Series Chillers offer capacities from 18 to 116 nominal tons. This series is designed for processes requiring chiller fluid temperatures from +20°F to +60°F.

Budzar also designs and manufactures specialized equipment for non-standard applications. Our engineers have extensive experience in process chilling and heating applications for such industries as: rubber, paper, plastics, chemical, food, and metal working. We take the time to understand your current and future needs and design a solution targeted at high quality and fast payback.



Bulletin #33A

engineering  
**PRECISION**

### **EXCELLENT RETURN ON INVESTMENT**

- Each Budzar unit is designed to maximize the productivity of your process. Budzar quality and reliability provide excellent value for each dollar invested.
- Modular concept provides flexibility – modules can be added as process requirements grow, thus saving on capital expenditure and operating costs.

### **LOW-COST, SIMPLE OPERATION AND MAINTENANCE**

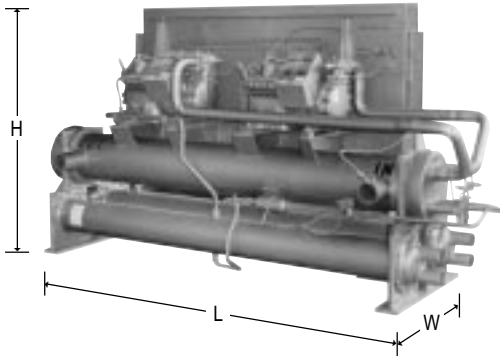
- Semi-hermetic compressors feature cylinder unloading capacity control for precise temperature control and extended equipment service life under varying load conditions.
- A.S.M.E. constructed steel shell and copper tube chiller vessels and evaporators are specifically selected for optimum performance and efficiency.
- Easy-to-monitor functions status indicators provide safe, easy operation.

### **QUICK AND EASY INSTALLATION**

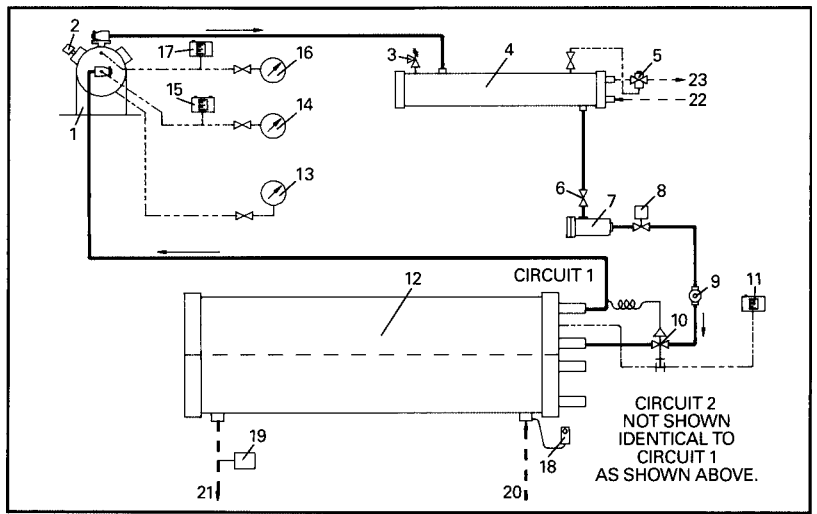
- All units are shipped with a full charge of refrigerant, ready for immediate connection to existing power and water lines.
- All units are factory tested prior to shipment.



process  
**TEMPERATURE**  
control



Model WM-70 illustrating two individual compressors with individual water cooled condensers and dual circuit chiller barrel.



1. Compressor
2. Unloader Solenoid
3. Relief Valve
4. Water Cooled Condenser
5. Water Regulating Valve (Field Installed)
6. Liquid Line Service Valve
7. Filter Drier
8. Liquid Line Solenoid Valve
9. Sight Glass/Moisture Indicator
10. Expansion Valve
11. Low Pressure Freeze Control
12. Chiller Barrel
13. Oil Pressure Gauge
14. Low Pressure Gauge (Suction)
15. Pumpdown Control
16. High Pressure Gauge (Discharge)
17. High Pressure Switch
18. Chiller Sequencing Thermostat
19. Flow Switch (Field Installed)
20. Process Water Inlet
21. Process Water Outlet
22. Condenser Tower Water Inlet
23. Condenser Tower Water Outlet

### WM-S SERIES WATER-COOLED CHILLER MODULES (Single Circuit/Single Compressor)

MODEL NO.		WM-20S	WM-25S	WM-30S	WM-35S
Capacity @ 50°F <sup>①</sup> -	TONS	18.0	24.4	27.7	35.7
Compressor -	HP	20	25	30	35
Evaporator Flow -	GPM	43.2	58.6	66.5	85.7
Chilled H <sub>2</sub> O Connection -	NPT	2"	2"	2"	2"
Nameplate Amps -	460V	32	41	50	61
Condenser Flow - 85°	GPM	54	73.2	83.1	107.1
Capacity Control -	%	100-55-0	100-55-0	100-71-37-0	100-71-37-0
Shipping Weight -	LBS	1340	1550	1740	1800
Dimensions -	LxWxH	102x40x35	105x30x47	102x33x48	106x33x48

### WM-D SERIES WATER-COOLED CHILLER MODULES (Dual Circuit/Dual Compressor)

MODEL NO.		WM-45D	WM-50D	WM-65D	WM-70D
Capacity @ 50°F <sup>①</sup> -	TONS	43.0	48.8	63.3	71.4
Compressor -	NO/HP	(1)-20 (1)-25	(2)-25	(1)-30 (1)-35	(2)-35
Evaporator Flow -	GPM	103.2	117	151.9	171.4
Chilled H <sub>2</sub> O Connection -	NPT	4"	4"	5"	5"
Nameplate Amps -	460V	74	84	114	122
Condenser Flow - 85°	GPM	129	146.4	189.9	214.2
Capacity Control -	%	100-74-54-24-0	100-77-54-27-0	100-86-68-24-0	100-88-76-39-0
Shipping Weight -	LBS	3580	3660	3860	4010
Dimensions -	LxWxH	117x35x63	117x35x63	117x35x64	117x35x64
MODEL NO.		WM-80D	WM-90D	WM-100D	WM-110
Capacity @ 50°F <sup>①</sup> -	TONS	83.7	99.8	107.7	115.6
Compressor -	NO/HP	(2)-40	(2)-50	(1)-50 (1)-60	(2)-60
Evaporator Flow -	GPM	200.1	239.5	258.5	277.4
Chilled H <sub>2</sub> O Connection -	NPT	5"	5"	6"	6"
Nameplate Amps -	460V	130	164	183	202
Condenser Flow - 85°	GPM	251.1	299.4	323.1	346.8
Capacity Control -	%	100-87-74-38-0	100-80-60-31-0	100-78-60-29-0	100-80-60-31-0
Shipping Weight -	LBS	4110	4590	5075	5225
Dimensions -	LxWxH	117x35x64	117x35x66	117x35x67	117x35x67

<sup>①</sup> Capacity based upon chilling water from 60°F to 50°F with 85°F to 90°F condenser water.

Budzar Industries reserves the right to discontinue or change specifications without notice, consistent with sound engineering practice and current industrial standards.



38241 Willoughby Pkwy., Willoughby, Ohio 44094-7582  
 (440) 918-0505 • Fax (440) 918-0606/918-0707  
 Internet: www.budzar.com  
 E-mail: sales@budzar.com